



STATE OF NORTH CAROLINA
DEPARTMENT OF TRANSPORTATION

JOSH STEIN
GOVERNOR

February 3, 2026

DANIEL H. JOHNSON
SECRETARY

ADDENDUM # 1

Contract No. DN01133
TIP No.: N/A
Federal Aid No.: State Funded
WBS Element: 2026CPT.14.04.10561, 2026CPT.14.04.20561
County: Macon
Description: Resurfacing: Paving, Pavement Marking, Traffic Control Along US-64
And Various Secondary Routes Throughout Macon County

Letting Date: February 10, 2026

Plan Holders

**Content Summary: Addition of Plan Sheet 5 with Typical Sections and Surfacing
Schedule**

The above contract has experienced the following revisions:

Insert the attached Plan Sheet into the plans set that was advertised.

These revisions do not change bid items or the associated quantities.

There is no ebsx addenda file associated with this addendum.

Thank you for your attention to this matter.

If you have any questions, please contact the Division Proposal Engineer at (828) 331-5200.

Sincerely,

Signed by:

A handwritten signature in blue ink, appearing to read "Jeanette L. White".

29BD93927CF24F6...

Jeanette L. White, P.E.
Highway Division 14, Project Development-
Team Lead

Mailing Address:
NC DEPARTMENT OF TRANSPORTATION
DIVISION OF HIGHWAYS - DIVISION 14
253 WEBSTER ROAD
SYLVA, NC 28779

Telephone: (828) 331-5200
Fax: (828) 331-5201
Customer Service: 1-877-368-4968

Website: www.ncdot.gov

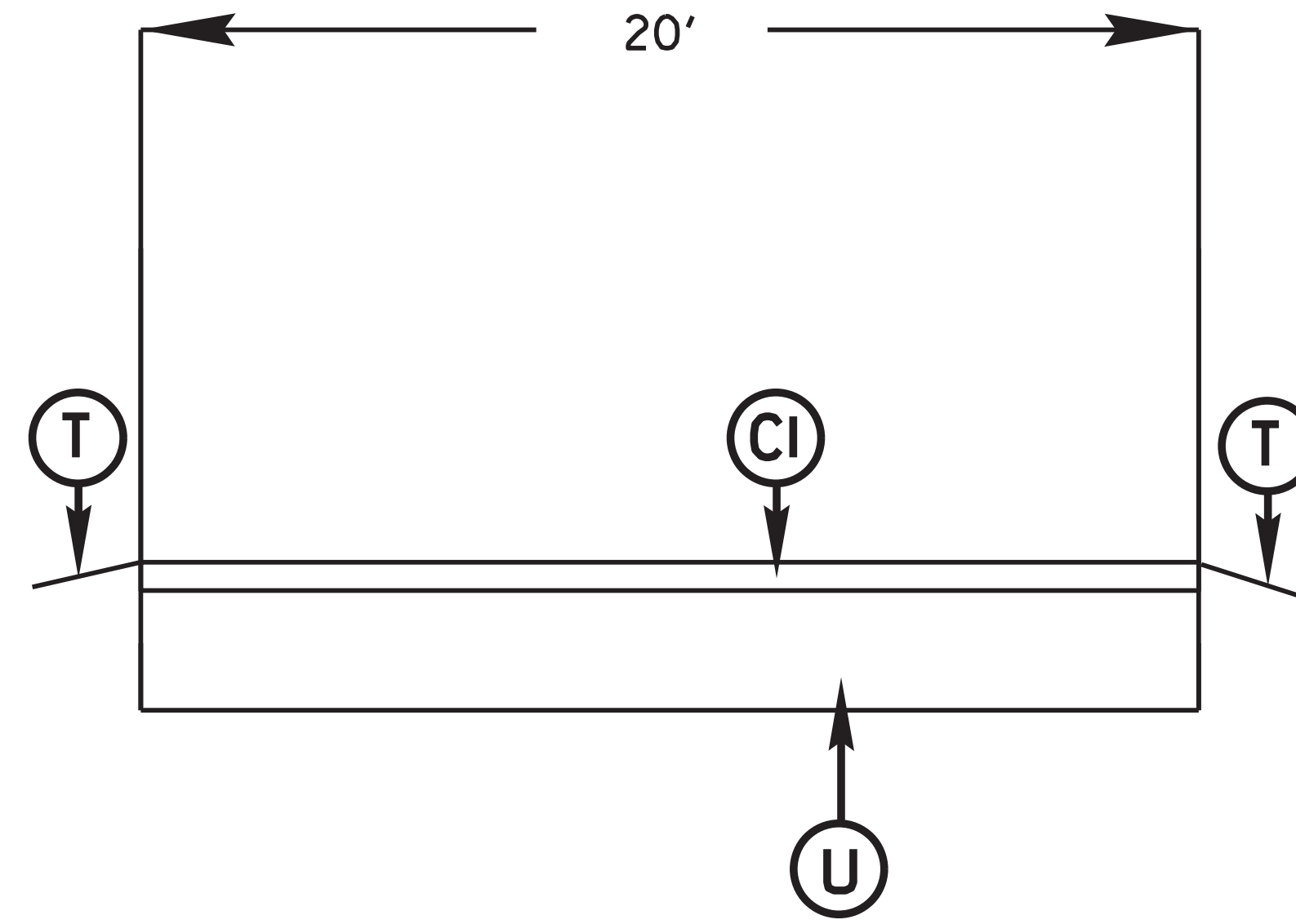
Location:
253 WEBSTER ROAD
SYLVA, NC 28779

STATE	STATE PROJECT REFERENCE NO.	SHEET NO.	TOTAL SHEETS
N.C.	2026CPT.14.04.10561	5	
STATE PROJ. NO.	F. A. PROJ. NO.	DESCRIPTION	
2026CPT.14.04.10561			
2026CPT.14.04.20561			

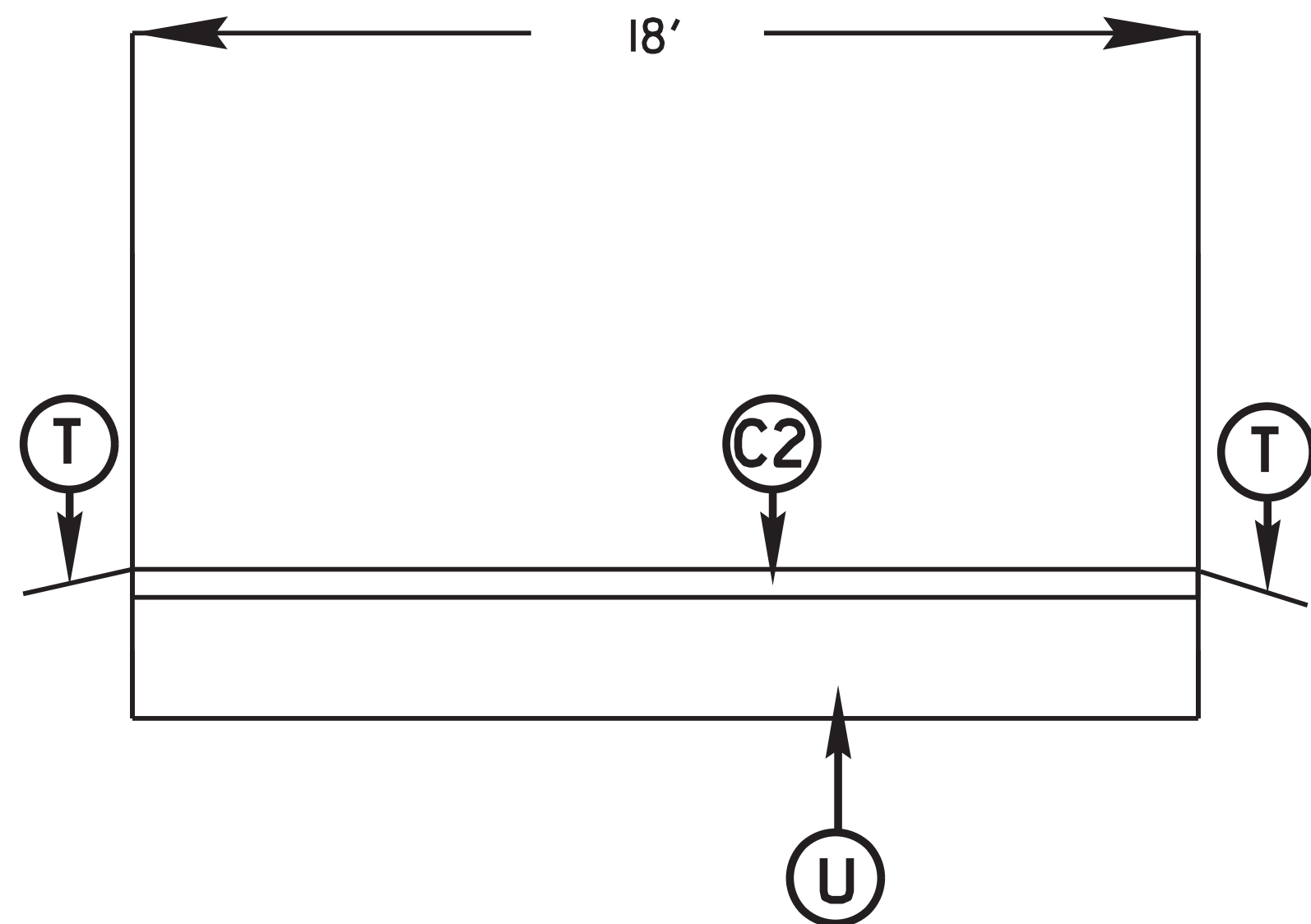
SURFACING SCHEDULE

C1	PROP. APPROX. 1 1/2" ASPHALT CONCRETE SURFACE COURSE, TYPE S9.5C, AT AN AVERAGE RATE OF 168LBS. PER SQ. YD.
C2	PROP. APPROX. 1 1/2" ASPHALT CONCRETE SURFACE COURSE, TYPE S9.5B, AT AN AVERAGE RATE OF 165LBS. PER SQ. YD.
C3	PROP. APPROX. 1 1/4" ASPHALT CONCRETE SURFACE COURSE, TYPE S9.5B, (LEVELING COURSE), AT AN AVERAGE RATE OF 138LBS. PER SQ. YD.
T	SHOULDER RECONSTRUCTION WITH ASB. 2' WIDE UNLESS DIRECTED BY PROJECT ENGINEER -SEE PROJECT SPECIAL PROVISIONS-
U	EXISTING PAVEMENT

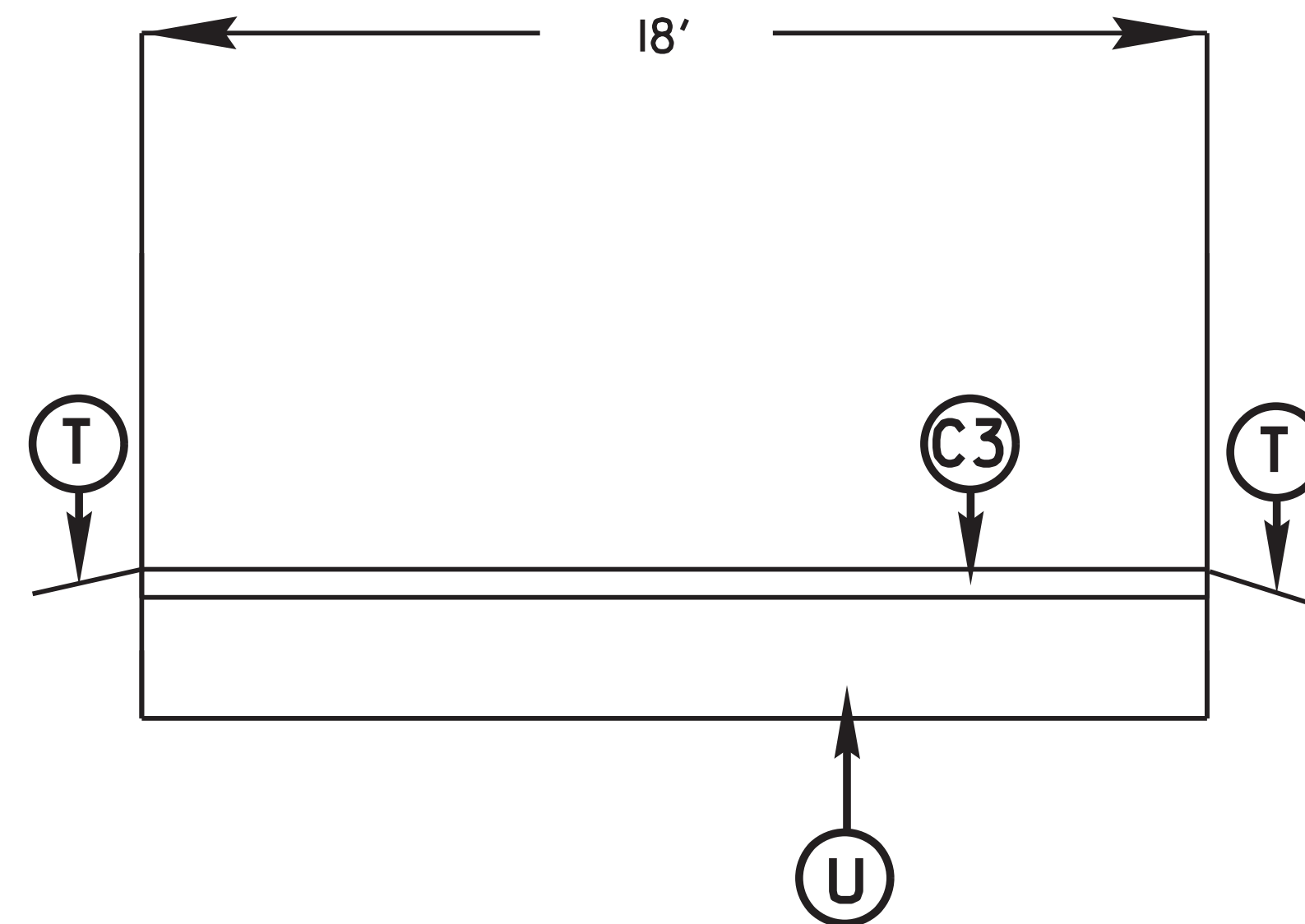
TYPICAL 1



TYPICAL 2



TYPICAL 3



CONTRACT: DN01133

09/08/09